



LTSI

WorkShop

Long Term Support Initiative

Tsugikazu SHIBATA, NEC

20, May 2014

LinuxCon Japan@Chinzan so

Agenda

- LTSI update
- Release process discussion
- Test update
- Development schedule

LTSI release process



- Add tags for LTSI for every LTS by greg
 - Everyone can pull and be able to create tar ball
 - Test would be done by every companies
- Formal release need test and it takes about 3 weeks then formal tar ball will be released in 3 month cycle
 - We are welcome companies who would be able to join internal test

LTSI3.10 history

Event	Date
kernel 3.10 merge window open	2013.4.28
kernel 3.10 merge window close	2013.5.12
kernel 3.10 release	2013.6.30
Announce of 2013 LTS kernel version	2013.8.4
LTSI-3.10 git tree open	2013.9.11
3.10 becomes LTS (=3.12 release)	2013.11.15
LTSI-3.10 merge window open	
patch collection period	75 days
LTSI-3.10-rc1 (=merge window close)	2014.1.29
validation period	26 days
LTSI-3.10 release	2014.2.24

THANK YOU



How you can participate LTSI



- Follow on Twitter account:

@LinuxLTSI



LinuxLTSI

@LinuxLTSI

LTSI stands for Long-Term Support Initiative. A group of CE Working Group of the Linux Foundation to provide Long-Term and stable Linux for Industry

- Web:

<http://ltsi.linuxfoundation.org>

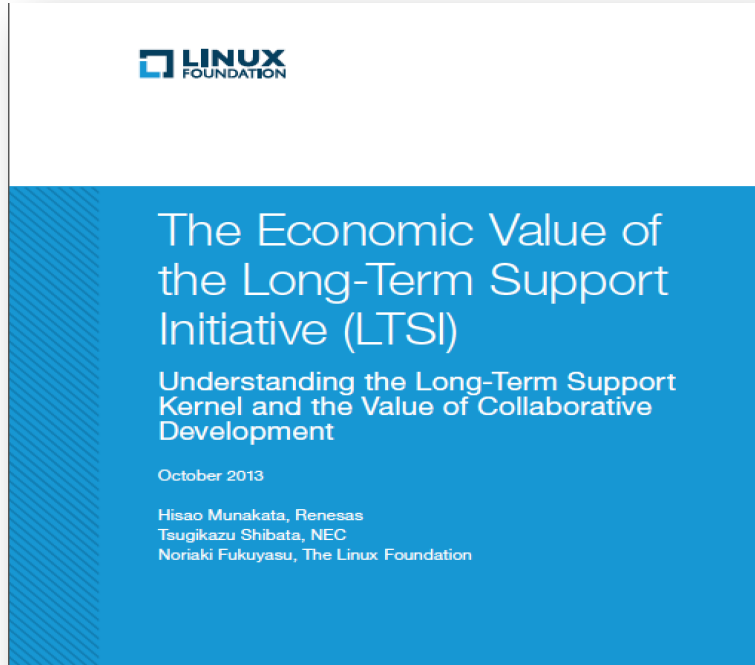
- Mailing list:

<https://lists.linuxfoundation.org/mailman/listinfo/ltsi-dev>

- Git tree :

<http://git.linuxfoundation.org/?p=ltsi-ernel.git;a=summary>

White paper: Economic value of LTSI



Maintenance cost of single LTS version is about 3M\$

<http://www.linuxfoundation.org/publications/workgroup/value-of-ltsi>